



The Scottish Parliament
Pàrlamaid na h-Alba

Maths - Problem Solving

Question 1

There are 129 MSPs. If 56 MSPs vote yes, and 3 abstain, how many vote no? (Remember the Presiding Officer doesn't vote unless there is a tie between yes and no votes).

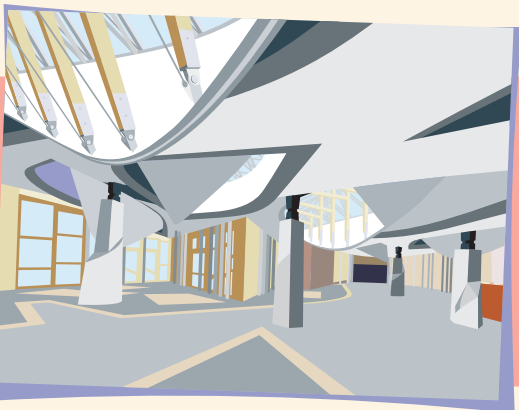


Question 2

There are 108 offices for MSPs in the MSP building. How many MSPs have offices elsewhere in the Parliament buildings?

Question 3

The Presiding Officer can only vote when there is a tie between yes and no votes. If 54 MSPs vote yes and 8 abstain, how many must vote no to make the PO vote?



Question 4

All 129 MSPs are in the Garden lobby. One third leaves to go to the Debating Chamber. How many are left in the Garden Lobby?

Question 5

At the 2011 election, 45 women were elected as MSPs. How many MSPs are men?

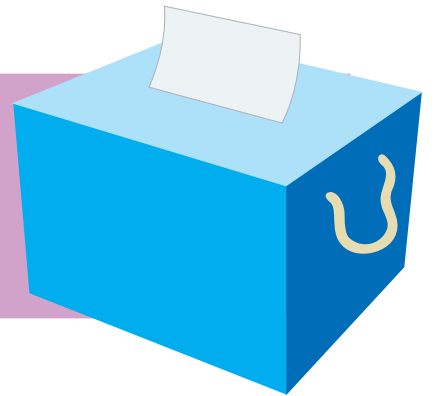


The Scottish Parliament
Pàrlamaid na h-Alba

Maths - Problem Solving

Question 6

The SNP won 69 out of the 129 seats at the 2011 election. Write this as a fraction. Remember to simplify the fraction.



Question 7

The MSP for Aberdeen travels by train to the Parliament in Edinburgh. He catches a train at 09:52 and the journey takes 2 hours and 33 minutes. When will he arrive in Edinburgh?

Question 8

5 constituents each write a letter to their 8 MSPs. How many stamps do they need altogether?

Question 9

A MSP receives 100 emails a day. How many emails does the MSP get in a year?



Question 10

There are 272 lights in the chamber. If 25% weren't working how many lights would be on?





The Scottish Parliament
Pàrlamaid na h-Alba

Maths - Problem Solving



Question 11

A debate started at 14.35. Each MSP was given 6 minutes to speak. If there were 8 speakers, what time did the debate finish?

Question 12

128 MSPs were in the chamber at decision time. 50% voted Yes, 25% No. How many abstained?

Question 13

A debate starts at 14:00. The first 6 speakers speak for 6 minutes each. The next 6 speak for 3 minutes each. The last speaker speaks for 6 minutes. When does the debate end?

Question 14

An MSP has a meeting in the Parliament at 10:00. She travels by bus to the Parliament and the journey takes 50 minutes. She then has a 15 minute walk from the bus station to the Parliament. It then takes her 5 minutes to get to the meeting room in the building. There are three bus times - 8:20, 8:50 and 9:20. Which one will get her there in time for her meeting?

